

# MELSOFT Library Sample Ladder Instruction Guide

This guide describes the procedures for reusing a MELSOFT Library sample ladder for your project.

## < CONTENTS >

1. GX Works2.....	3
2. GX Developer.....	8

Revision History

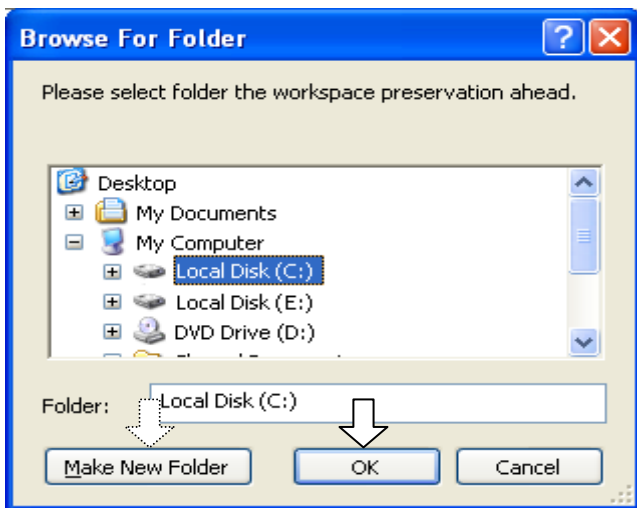
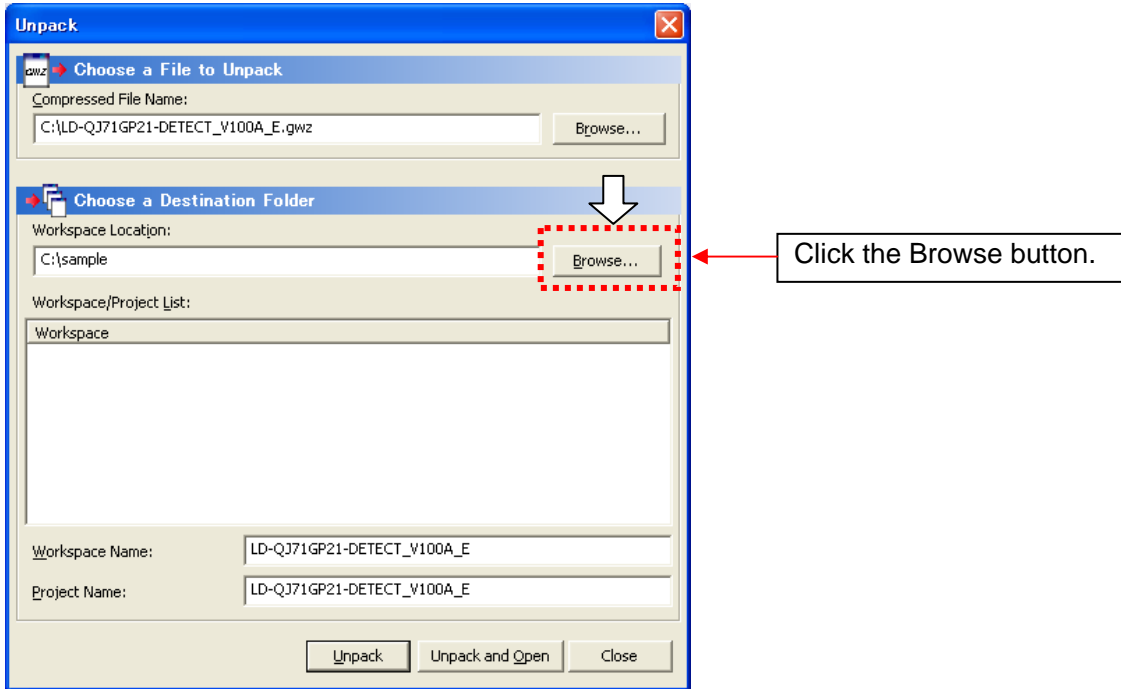
Version	Description	Date
A	First edition	Sep. 26,2011

# 1. GX Works2

(1) Unpack the gwz file for GX Works2, and double-click the gwd file.



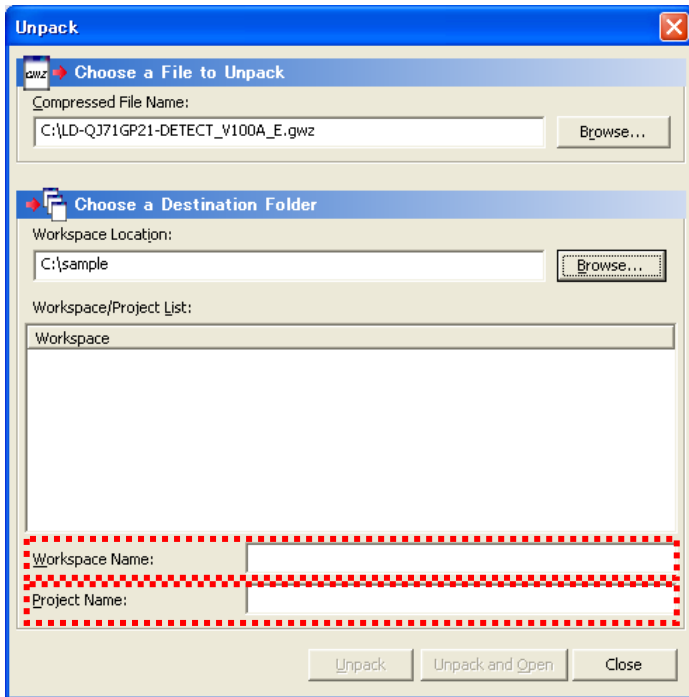
(2) Select a workspace location on the Unpack dialog box.



Select a corresponding folder and click the OK button.

To create a new folder, click the Make New Folder button, make folder settings and click the OK button.

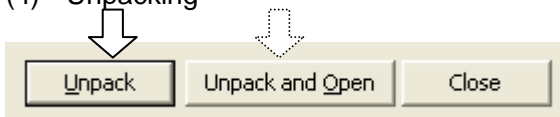
(3) Setting names  
Enter a workspace name and project name.



Specify the name of a workspace in which the unpacked project is saved.

Specify the name for an unpacked project.

(4) Unpacking

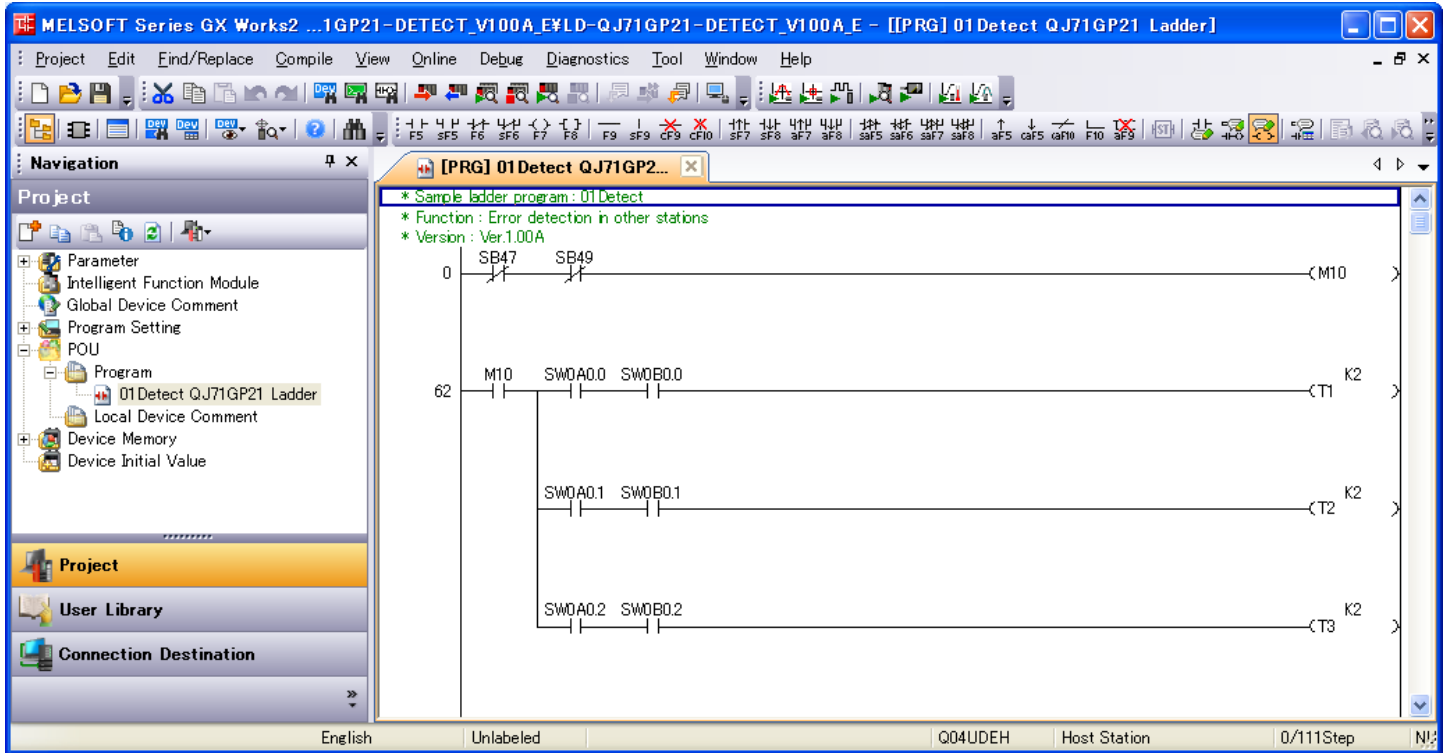


To unpack only, click the Unpack button.  
To unpack and open the project, click the Unpack and Open button.

An unpacking operation is performed.



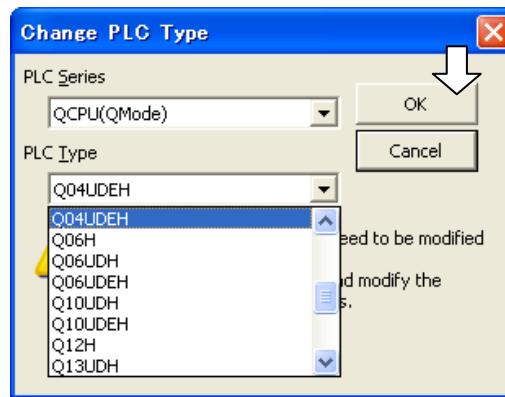
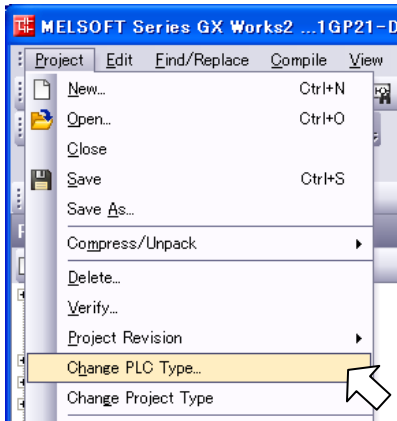
(5) Open the sample ladder project that was unpacked.



(6) Changing the PLC type

Change the PLC type of the sample ladder project to the CPU type of the destination project.

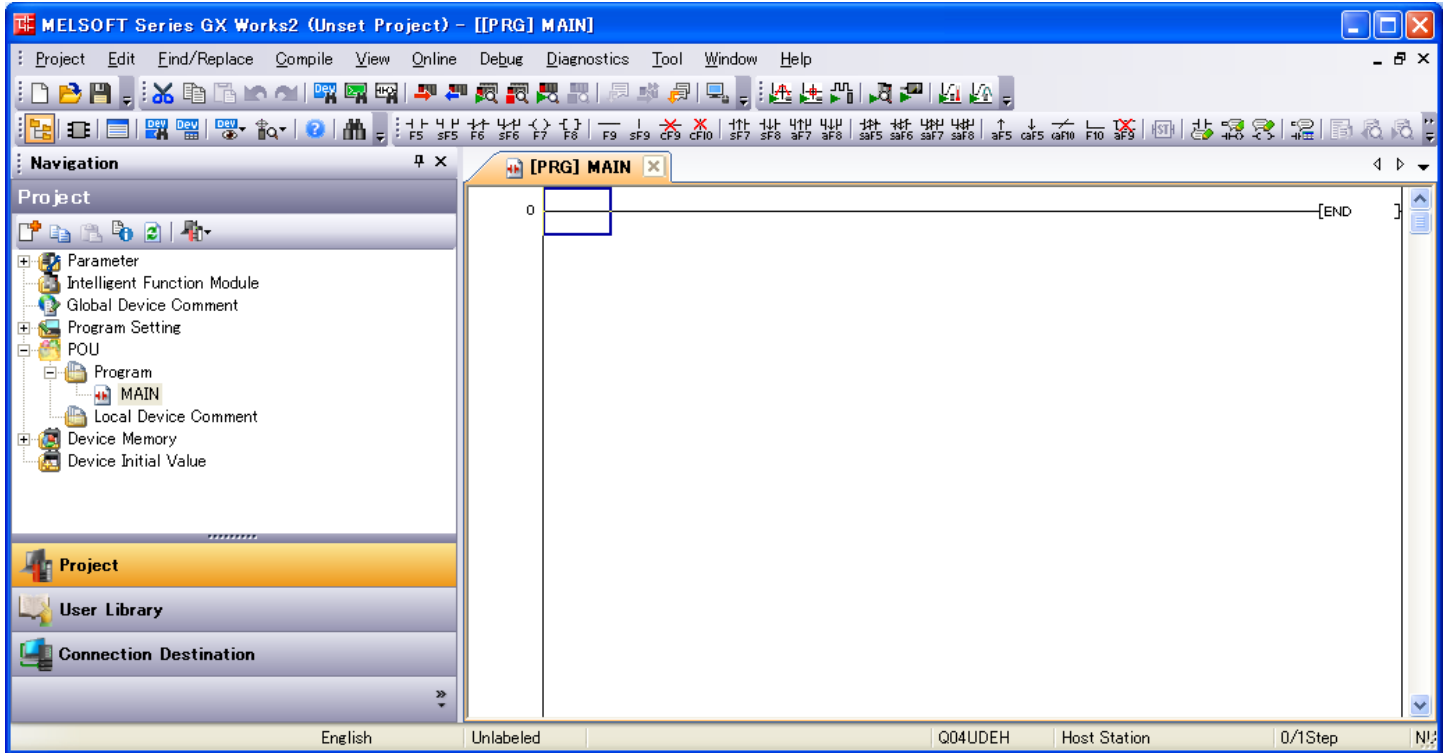
(This operation is unnecessary if the CPU type is the same between the sample ladder and the destination project.)



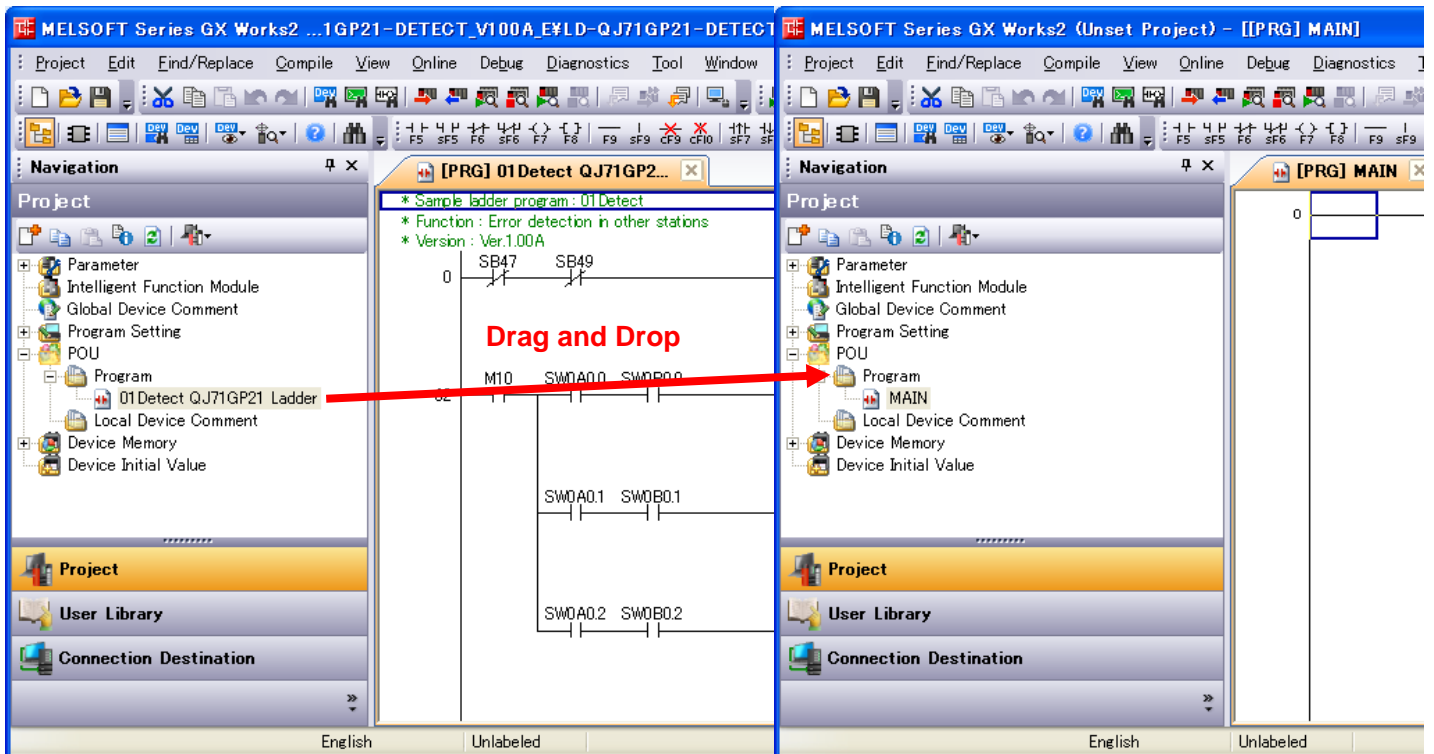
Select Project - Change PLC Type.

Select the new PLC type and click the OK button. (In the example, Q04UDEHCPU is selected.)

(7) Start the destination project.

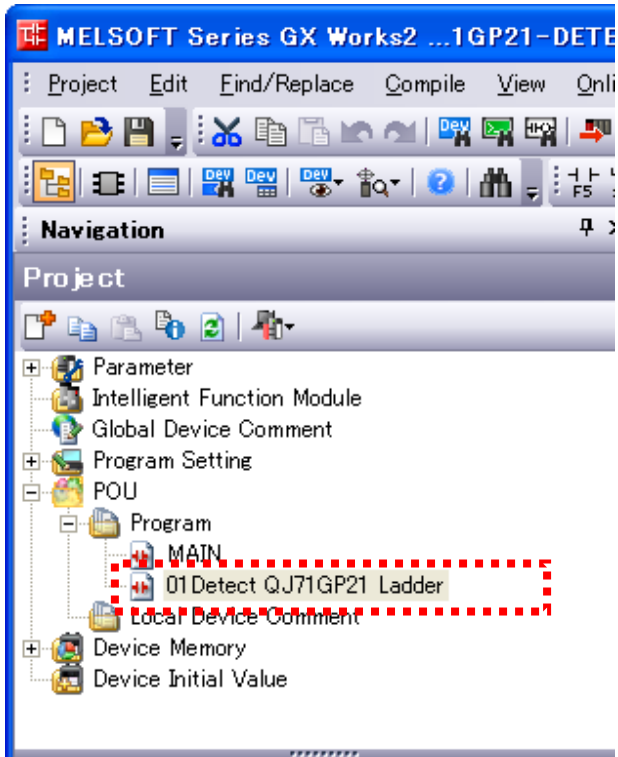


(8) Drag and drop of a program



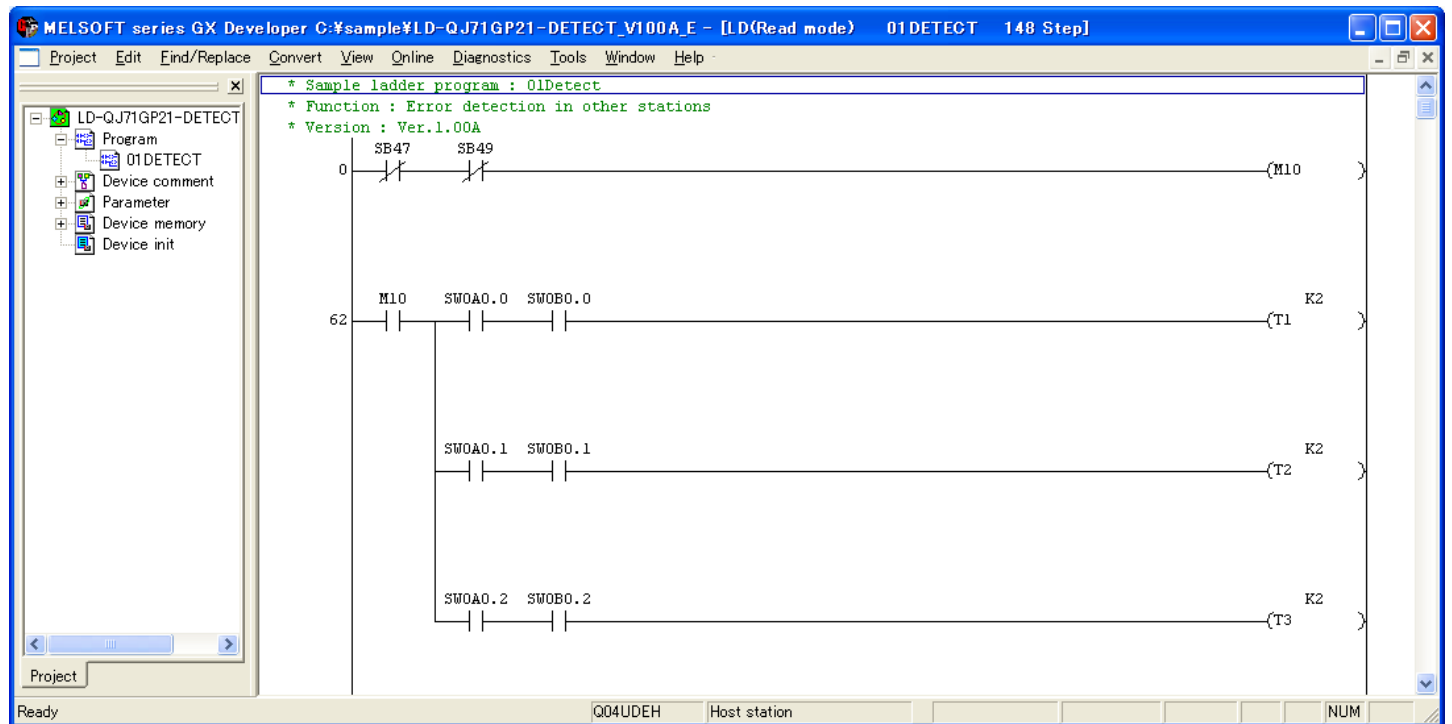
Drag and drop a program you want to reuse from a sample ladder project to the destination project.

The program is copied to the destination project.



## 2. GX Developer

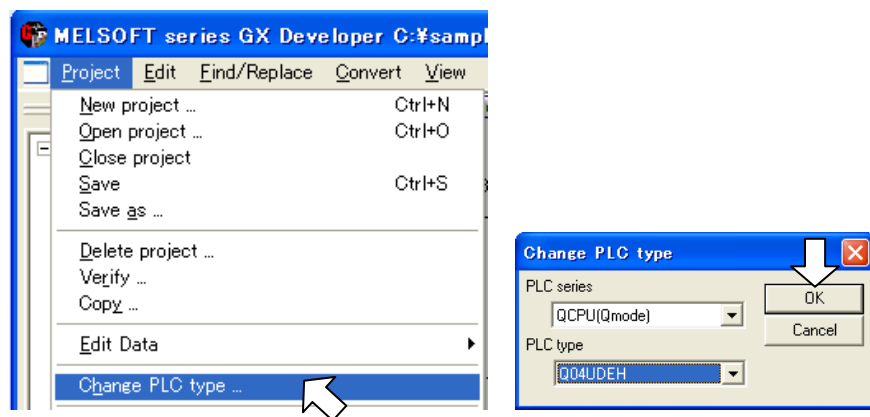
(1) Start the sample ladder project.



(2) Changing the PLC type

Change the PLC type of the sample ladder project to the CPU type of the destination project.

(This operation is unnecessary if the CPU type is the same between the sample ladder and the destination project.)



Select Project - Change PLC Type.

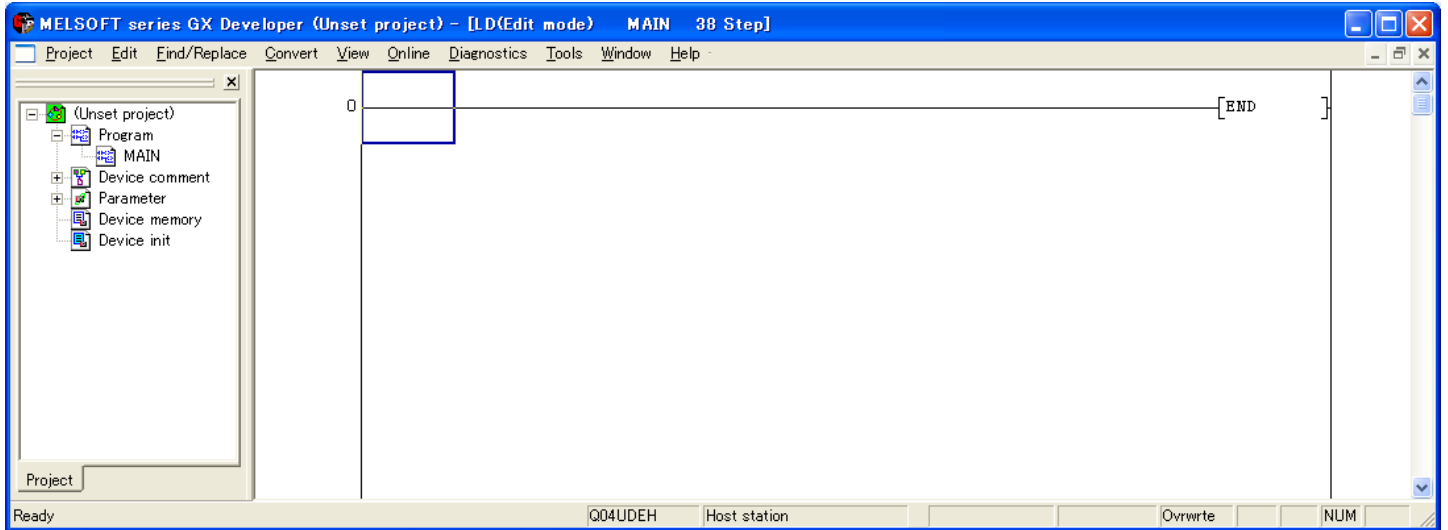
Select the new PLC type and click the OK button. (In the example, Q04UDEH CPU is selected.)

(3) Saving the project data

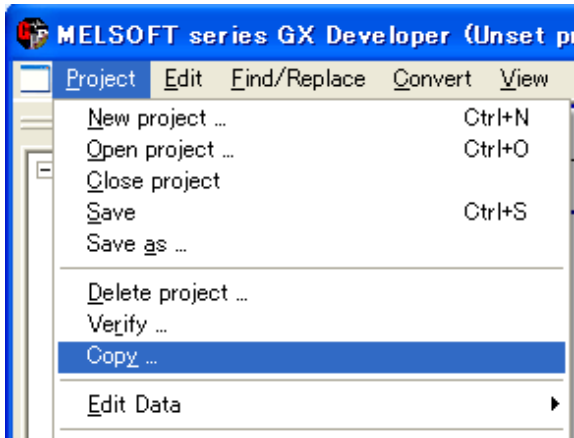
Save the project data and exit the GX Developer.



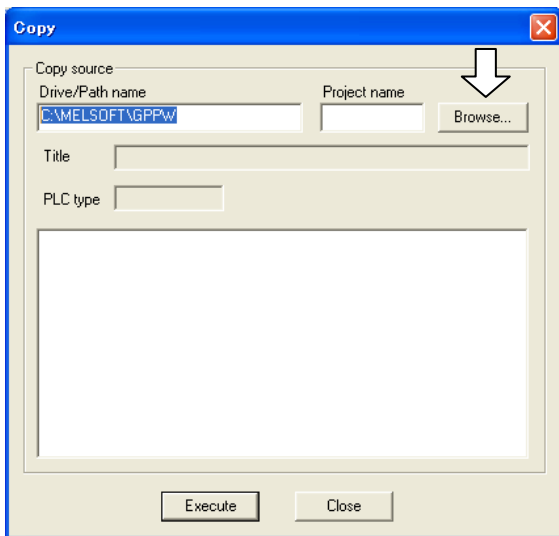
(4) Start the destination project.



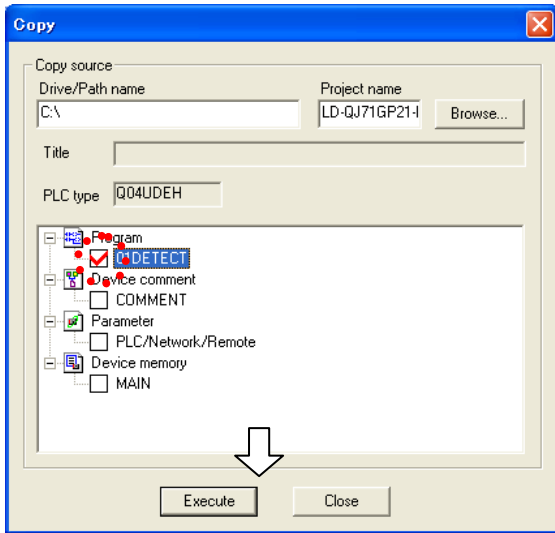
(5) Copying a program



Select Project – Copy.



Click the Browse button and select a sample ladder project you want to reuse.



After selecting a project, select a program you want to copy and click the Execute button. When the process is completed successfully, a message stating “Completed.” appears.

The program is copied to the destination project.

